



Villa

L'Oasi

*Where life slows down*

# Villa L'Oasi

A sun-soaked oasis in the heart of Palma, this townhouse in Son Espanyolet offers calm and seclusion just steps from the city's vibrant rhythm. Once a quaint fishing village, the streets of Son Espanyolet retain their charm and community spirit, with cafés, boutiques, and the famed market nearby. Here, modern design meets Mediterranean ease, creating a private retreat where city life and serenity exist in perfect balance.



VILLA L'OASI  
Connections



..... PALMA OLD TOWN  
4 MIN DRIVE

..... CALA MAJOR BEACH  
8 MIN DRIVE

..... CASTILLO DE BELLVER  
6 MIN DRIVE

..... PALMA PORT  
6 MIN DRIVE

..... CATHEDRAL  
14 MIN DRIVE

..... PALMA BEACH  
11 MIN DRIVE

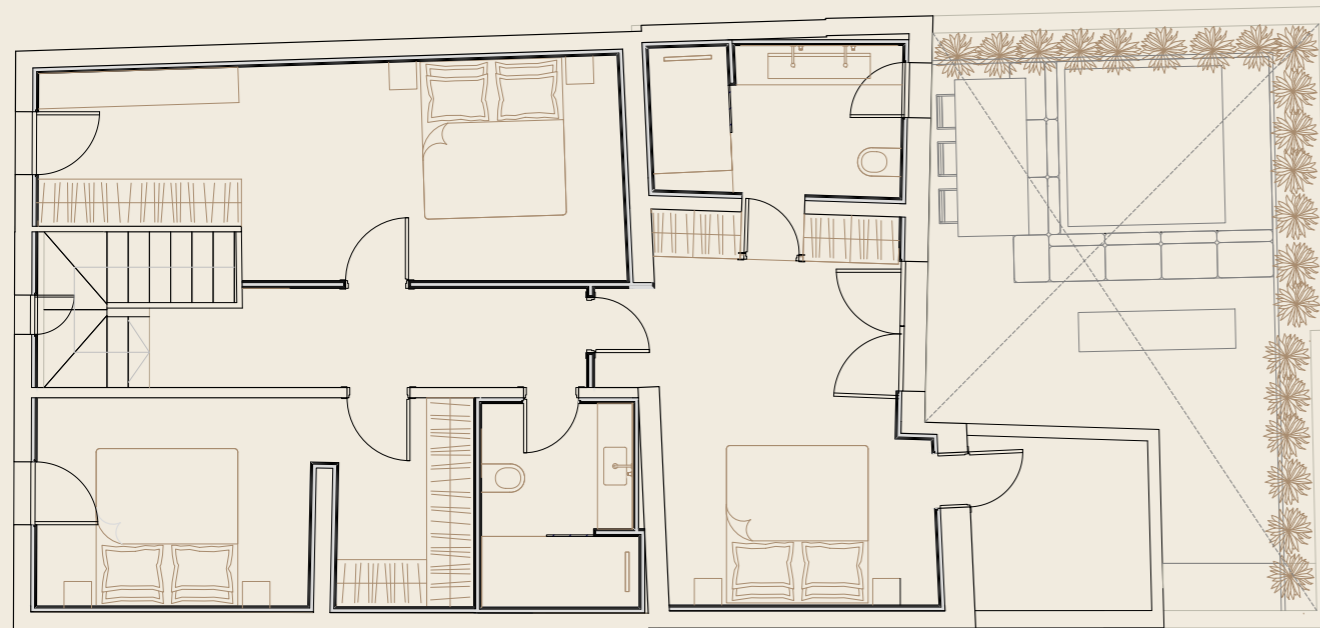
..... PORTITXOL BEACH  
13 MIN DRIVE

..... AIRPORT  
12-15 MIN DRIVE

**VILLA L'OASI**  
Overall Floor Plans



Ground Floor Plan



First Floor Plan

<b>SIZE</b>	<b>LOCATION</b>	<b>TYPE &amp; STATUS</b>
Built Area: 200m <sup>2</sup> Plot Size: 125m <sup>2</sup>	Son Espanyolet	Private Residence Newly Completed
<b>BEDROOMS</b>	<b>BATHROOMS</b>	<b>EXTERNAL</b>
4	3	Terrace & Balcony Swimming Pool
<b>ORIENTATION</b>	<b>PARKING</b>	<b>FEATURES</b>
South, East, West	Included (2-minute walk)	Bespoke Kitchen Custom Vanity Units Fitted Wardrobes Air Conditioning

A newly completed four-bedroom residence in Son Espanyolet, where contemporary design meets the relaxed ease of Mediterranean living. Set on a peaceful village street, the home offers seamless indoor-outdoor living with a private garden and plunge pool, while being just a short stroll from Santa Catalina's vibrant restaurants, boutiques, and market.

## VILLA L'OASI

*Designed For Living*

### NATURAL LIGHT

A south and east-facing orientation, paired with floor-to-ceiling windows, fills the open-plan living spaces with natural light throughout the day, creating a seamless connection between indoors and the private garden.

### FLOW

The open-plan kitchen, dining, and living areas are designed for effortless movement, flowing naturally out to the garden. The layout balances ease of entertaining with the comfort of everyday living.

### PRIVACY

Four generous bedrooms are thoughtfully arranged across two levels, offering a clear separation between social and private spaces. Outside, the secluded garden with plunge pool provides a rare sense of privacy in the heart of Palma.

### CALM

Designed for year-round comfort, the home features underfloor heating, air conditioning, and a fireplace. Set on a quiet street in Son Espanyolet, the area is known for its low-rise charm and strong sense of community.

### ENTERTAINING

Generous open-plan interiors extend out to the private garden, creating a natural setting for hosting, from relaxed outdoor dining to intimate gatherings,



VILLA L'OASI  
Ground Floor Plan



GROUND FLOOR

The ground floor is designed for effortless living and entertaining. An open-plan layout brings together the living, dining, and kitchen areas, all bathed in natural light from floor-to-ceiling windows that frame the private garden. Sliding doors create a seamless connection between indoors and out, perfect for alfresco dining or quiet relaxation.

BEDROOMS	BATHROOMS	EXTERNAL
1	1	Terrace & Pool

AREA	SIZE
Entrance / Hallway	7.44m <sup>2</sup>
Salon, Dining & Kitchen	55.50m <sup>2</sup>
Guest toilet	2.00m <sup>2</sup>
Guest Bedroom / Home Office	9.33m <sup>2</sup>
Technical room	4.75m <sup>2</sup>
Terrace	29.66m <sup>2</sup>



*Living Spaces*

# WHERE LIFE HAPPENS

*Light and connection define this space. The open-plan living area seamlessly merges kitchen, dining, and lounge, with the bespoke kitchen flowing effortlessly into generous spaces for living and entertaining.*

VILLA L'OASI  
*Salon Visual*



Renders are for illustrative purposes only and serve as a conceptual representation of the design.

| *Where life slows down*

VILLA L'OASI  
*Dining + Kitchen Visual*



Renders are for illustrative purposes only and serve as a conceptual representation of the design.

| *Where life slows down*

VILLA L'OASI  
*Garden Terrace Visual*



Renders are for illustrative purposes only and serve as a conceptual representation of the design.

| *Where life slows down*

VILLA L'OASI  
*Garden Terrace Visual*

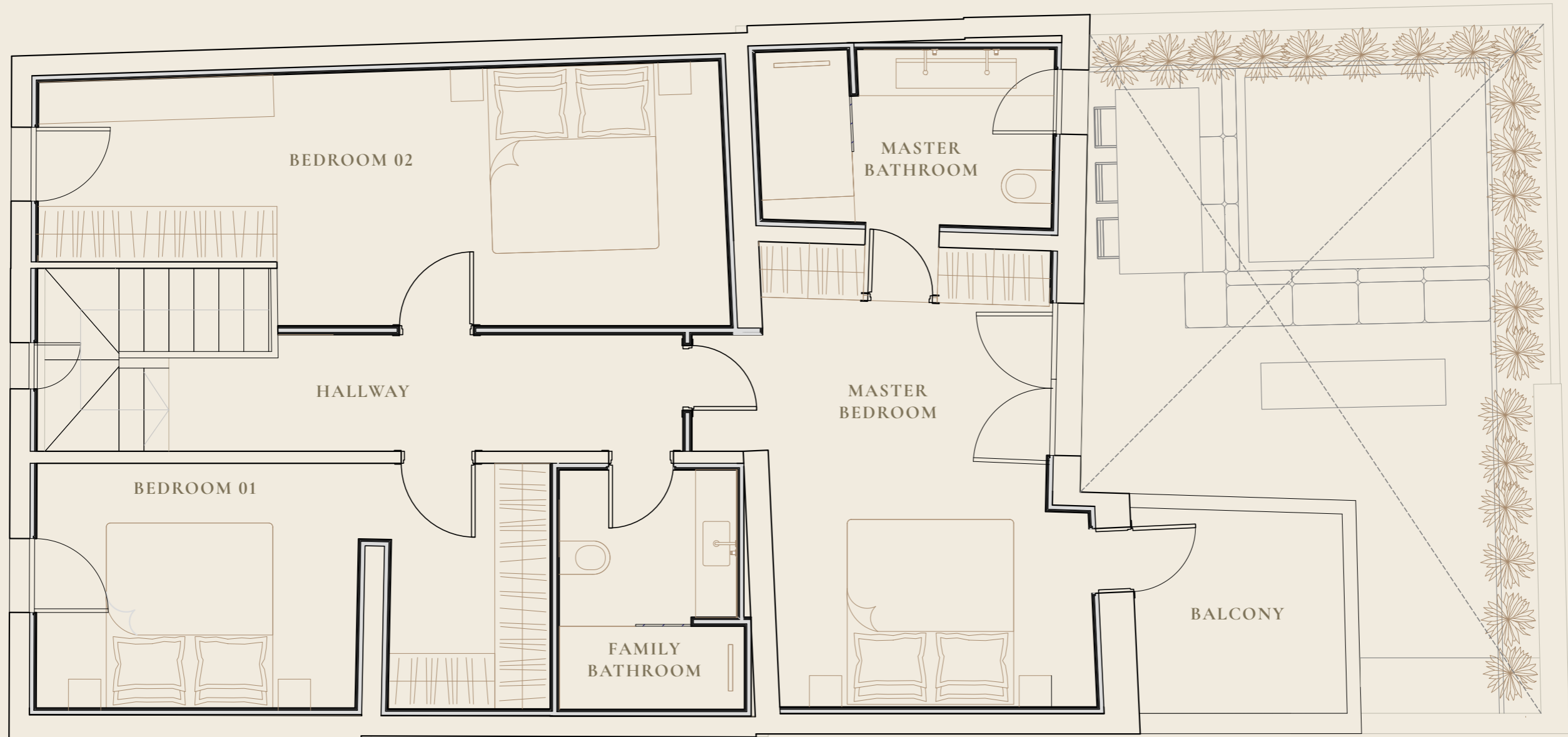


Renders are for illustrative purposes only and serve as a conceptual representation of the design.

| *Where life slows down*

# VILLA L'OASI

## First Floor Plan



### FIRST FLOOR

The first floor houses three generous double bedrooms with high ceilings and built-in wardrobes, including a master suite with a luxurious en-suite bathroom. A further family bathroom features both a bathtub and separate shower, combining style and functionality.

### BEDROOMS

3

### BATHROOMS

2

### EXTERNAL

Master Balcony

### AREA

Hallway  
 Master Bedroom  
 Master Bathroom  
 Balcony  
 Bedroom 01  
 Bedroom 02  
 Family Bathroom

### SIZE

8.21m<sup>2</sup>  
 17.00m<sup>2</sup>  
 6.00m<sup>2</sup>  
 4.98m<sup>2</sup>  
 13.54m<sup>2</sup>  
 18.36m<sup>2</sup>  
 5.50m<sup>2</sup>



*Master Bedroom*

## WHERE LIGHT MEETS REST

*South-facing master bedroom with exposed beam ceilings that echo Mediterranean architecture, adding character and warmth to the space. Flooded with natural light throughout the day, this sanctuary becomes an oasis of calm and comfort.*

VILLA L'OASI  
*Master Bedroom Visual*



Renders are for illustrative purposes only and serve as a conceptual representation of the design.

| *Where life slows down*

VILLA L'OASI  
*Master Bathroom Visual*



Renders are for illustrative purposes only and serve as a conceptual representation of the design.

| *Where life slows down*

## VILLA L'OASI

*Curated Finishes & Features*

### MATERIALS & FINISHES

A considered palette of engineered wood graces the first-floor bedrooms and stairs, while stone surfaces the ground floor and bathrooms, creating sophisticated, durable foundations throughout.

### KITCHEN

Bespoke cabinetry is designed to sit effortlessly within the open-plan living space, creating a calm, cohesive backdrop. Fully integrated Miele appliances include an induction hob with integrated extraction, oven, microwave-oven combination, dishwasher, and full-height refrigeration.

Thoughtful details such as a wine fridge, integrated bin, spice rack, and built-in dish drainer are seamlessly incorporated, ensuring the space remains as functional as it is refined.

### BATHROOMS

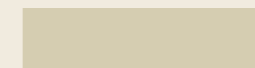
Refined and understated, the bathrooms feature GROHE fittings in their luxury Warm Sunset finish, balancing elegance with everyday functionality. Bespoke countertops with integrated basins, glass shower enclosures, and soft-close suspended toilets create a calm, spa-like atmosphere.

### LIGHTING & ELECTRICAL

Scene-setting LED lighting is subtly integrated behind the bathroom mirrors, casting a soft, ambient glow. JUNG switches and sockets provide a cohesive, sophisticated finish throughout the space.

### CLIMATE CONTROL

Comfort is assured year-round, with cosy underfloor heating and a fireplace for the cooler months, and built-in air conditioning to keep the home perfectly temperate during Mallorca's sun-filled summers.



# VILLA L'OASI

Lifestyle & Leisure | Life in the Neighbourhood

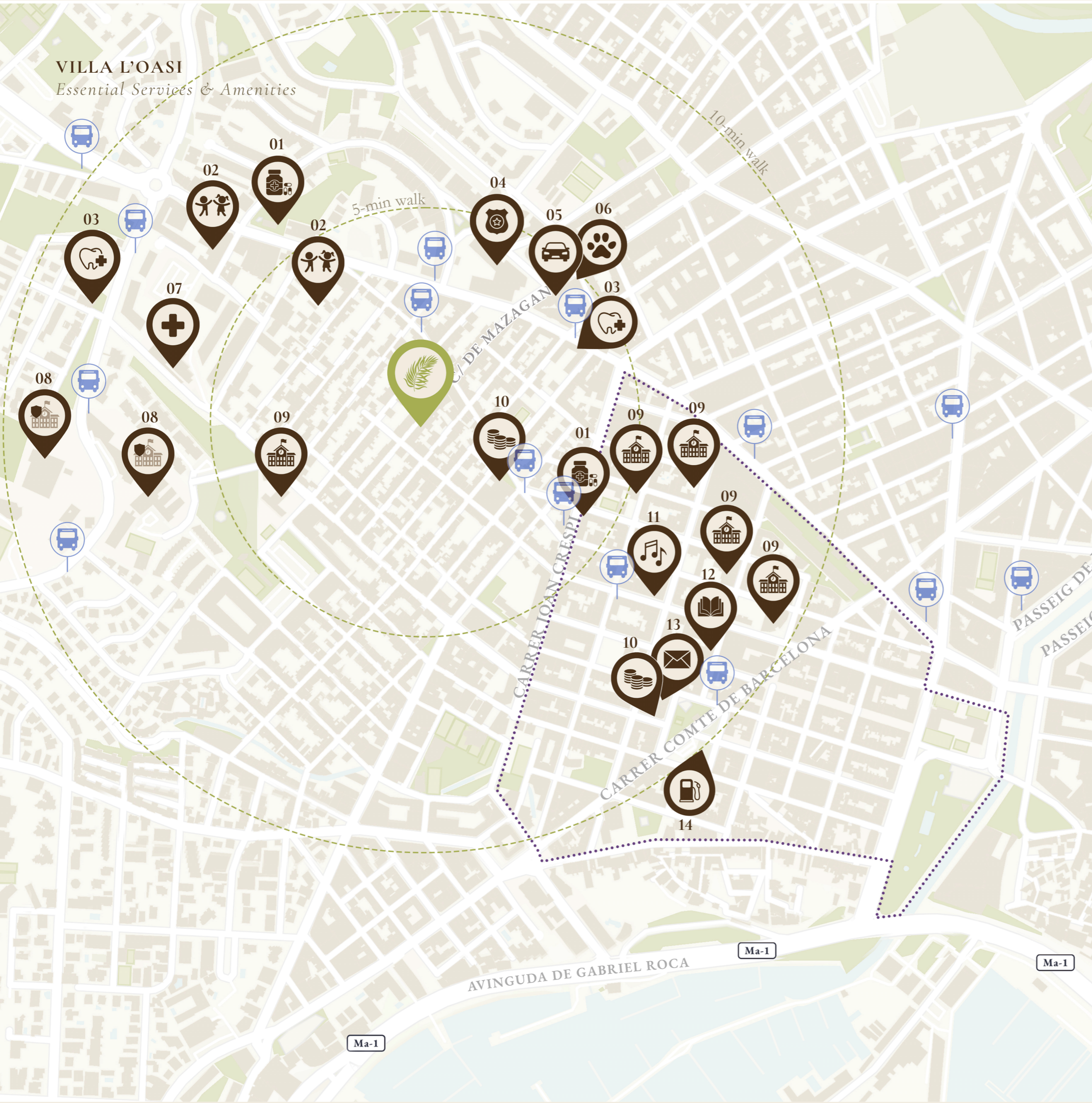


## THE LOCALS' FAVOURITES

01. Local Supermarket - Eroski
  02. Gym - Beats Training Club
  03. Pilates Studio - Aura Pilates Mallorca
  04. French Pastry Café - Sucre Sale Mallorca
  05. Local Artisans - Berangere B. & Adriane E.
  06. Arts & Events - Pueblo Español
  07. Tennis Club - Palma Sport & Tennis Club,
  08. Spanish Café - Orígenes Café de Especialidad
  09. Gym - VivaGym Santa Catalina
  10. Café in the Arches - SĀNTAL
  11. Cooking Class - Moltak
  12. Wine & Tapas - La Isolina
  13. Local Market - Mercat de Santa Catalina
  14. Thai Restaurant - Isaan Thai Cuisine
  15. Park Café - Café Poupette
  16. Museum with City Views - Es Baluard Museu
  17. Department Store - El Corte Inglés
  18. Paella Restaurant - Arrosseria Sa Cranca
  19. Waterfront Café - BACÁN
  20. Arts Venure - Auditòrium de Palma
- Santa Catalina

Where life slows down

VILLA L'OASI  
Essential Services & Amenities



NEIGHBOURHOOD ESSENTIALS

- 01. Pharmacy
- 02. Nursery
- 03. Dentist
- 04. Police Station
- 05. Mechanic
- 06. Veterinary
- 07. Hospital
- 08. Private School
- 09. Public School
- 10. Bank
- 11. Music School
- 12. Library
- 13. Post Office
- 14. Petrol Station

..... Santa Catalina

 Bus Stop

 Motorway



Villa  
L'Oasi

by

**OLIVE GROVE**  
Real Estate



ANDREA SUCHOMLINOVA

[info@olivegrovefund.com](mailto:info@olivegrovefund.com)

+34 618 40 62 06

## **DISCLAIMER**

This property is currently under construction. The 3D visualisations are provided for illustrative purposes only, reflecting the intended design and potential of the property. Final finishes, specifications and layouts may vary as the project evolves, however the overall quality and standard of the build will be maintained.